

ASSEMBLY, SEAT BOTTOM, FOLD-UP (00)

GENERAL NOTES:

1. C18-11-6012, CHESAPEAKE SAND: NEW ASSEMBLY P/N.
2. V18-11-6012, CHESAPEAKE SAND: VENDOR REWORK P/N.
3. SAMPLES WILL BE PROVIDED FOR PRODUCTION PURPOSES.
4. FOAM BONDED TO PAN WITH K-GRIP 200 CONTACT ADHESIVE.
5. DEBURR AND REMOVE ALL SHARP EDGES AND CORNERS.
6. DIMENSION UNITS ARE INCHES [MILLIMETERS].

Item No.	QTY	P/N	Description	Material/Spec	Weight/Dimensions
07	1		LABEL, (DESCRIPTION, MFG, P/N)	PAINTED STENCIL OR INDELIBLE INK LABEL	>1.5" x 6"
06	4		THREADED STAND OFF, WELDED	Ø1/2" ROD, COMMERCIAL QUALITY STEEL	
05	2		APPLIX, 1"x30.5", #800 HOOK PAIHO R1001H-25 OR EQUAL	POLYAMIDE	
04	2		APPLIX, 2"x12.5", #800 HOOK PAIHO R2001H-25 OR EQUAL	POLYAMIDE	
03	1	020-CP0278	UPHOLSTERY, COVER, BOTTOM, FOLD-UP	OMNOVA PREVAILL W/PREFFX SEE SHEET 4	
02	1	020-CP0100	FOAM, BOTTOM CUSHION, FOLD-UP	FOAM, CHESTNUT RIDGE SAFEGUARD XL, MEDIUM DENSITY NEOPRENE	
01	1	020-CP0160	PAN, BOTTOM CUSHION, FOLD-UP	LOW CARBON STEEL, COMMERCIAL QUALITY QUALITY IN ACCORDANCE W/ASTM A-366	.06 THK
00	1		ASSEMBLY, SEAT BOTTOM, FOLD-UP		

Rev.	Description & Date
C	PAGE 10F4, REVISED BOM AND GENERAL NOTES. PAGE 40F4, REVISED/ADDED MAT'L ID P/N. 21MAR12 ALC
B	REMOVED REFERENCE TO WMATA SPECIFICATIONS, CHAPTER 10.0, PAGE 4. 06FEB12 ALC
A	REVISED UPHOLSTERY COVERS AS PER VENDOR PROVIDED DATA. 05JAN12 ALC
-	INITIAL RELEASE. 07JUN11 ALC

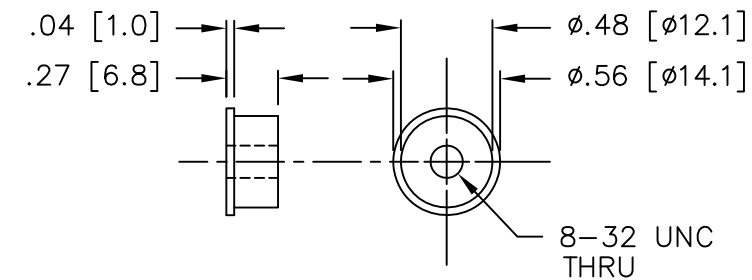
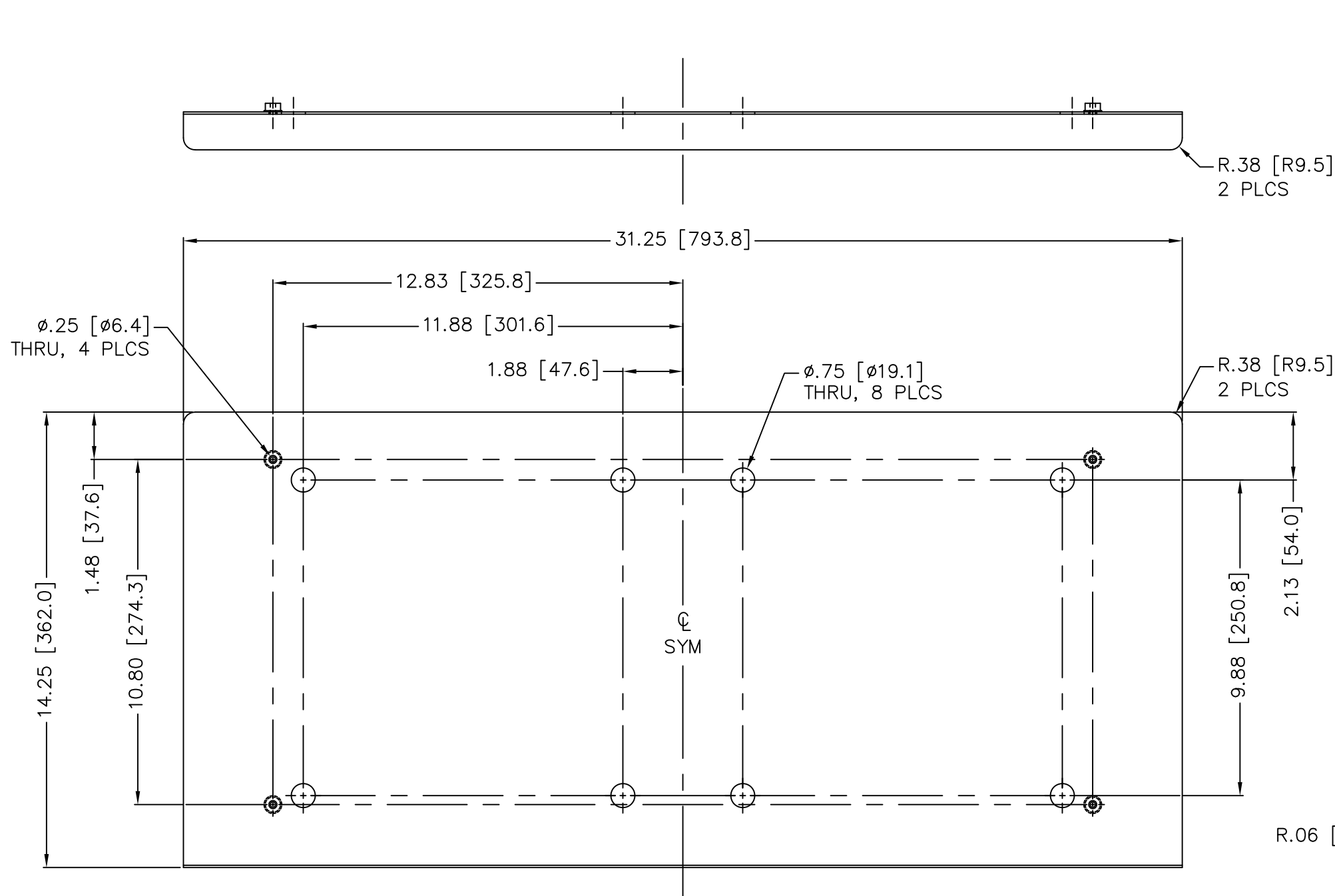
UNLESS OTHERWISE SPECIFIED FRACTIONS ±1/16" DECIMALS .X	ANGLES ±1°
.XX±.03 [.76]	UPHOLSTERY ±.25 [6.35]
.XXX±.010 [.254]	
Undim. Wall Thk.:	Undim. Radii:

Drawn by: A.CREECH	Int. Date: 07JUN11
Engr. Approval: Jeffery A. Thompson	Int. Date:
Approved by: Manuel A. Lopez	Int. Date:
Undim. Edges:	Scale: NOT TO SCALE

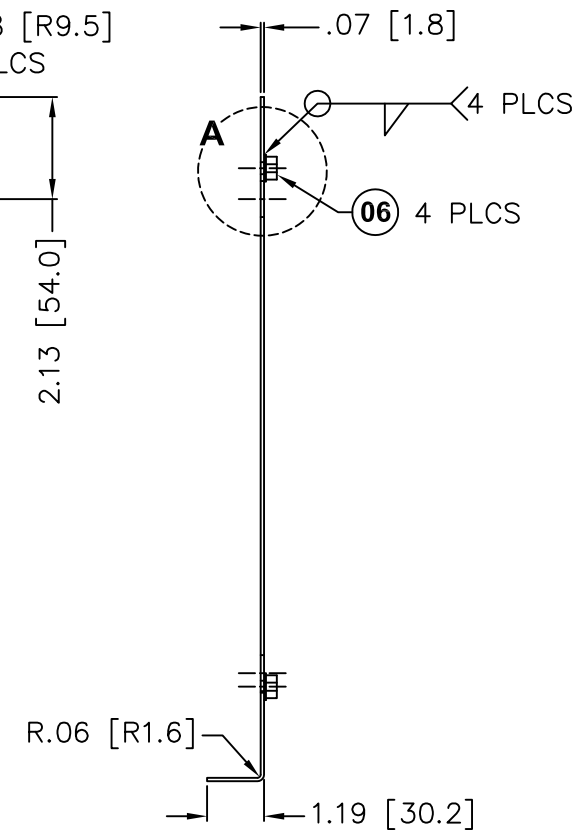
IF THIS DOCUMENT IS NOT MARKED "CONTROLLED" IN RED, THEN IT SHOULD BE USED AS REFERENCE ONLY.
THE DESIGN, CONCEPT AND INFORMATION CONTAINED IN THIS DRAWING IS PROPRIETARY TO WASHINGTON METROPOLITAN AREA TRANSIT AUTHORITY AND MAY NOT BE REPRODUCED, USED OR DISCLOSED WITHOUT WRITTEN PERMISSION OF SAID COMPANY.
Sheet Size: B
Next Assembly:

M WASHINGTON METROPOLITAN AREA TRANSIT AUTHORITY
Title: 5K SERIES ASSEMBLY, SEAT BOTTOM, FOLD-UP CAR BODY
Part. No.: C18-11-6012
Dwg. No.: WDC18116012-C
Sheet: 1 of 4

CONTROLLED



06 ENLARGEMENT "A"
SCALE: 1:1



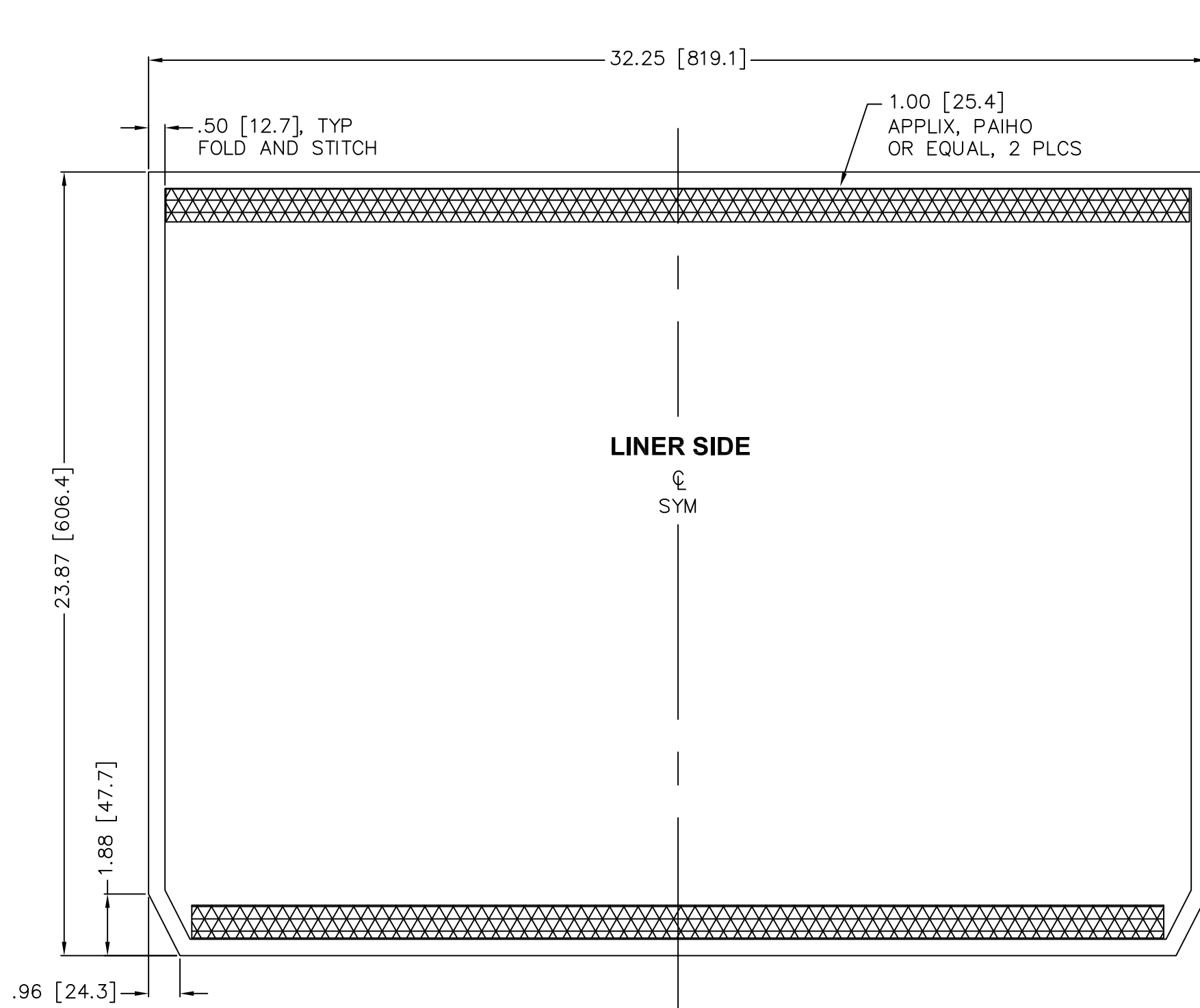
PAN, BOTTOM, FOLD-UP 01
PART IS SYMETRICAL ABOUT CENTERLINE

CONTROLLED

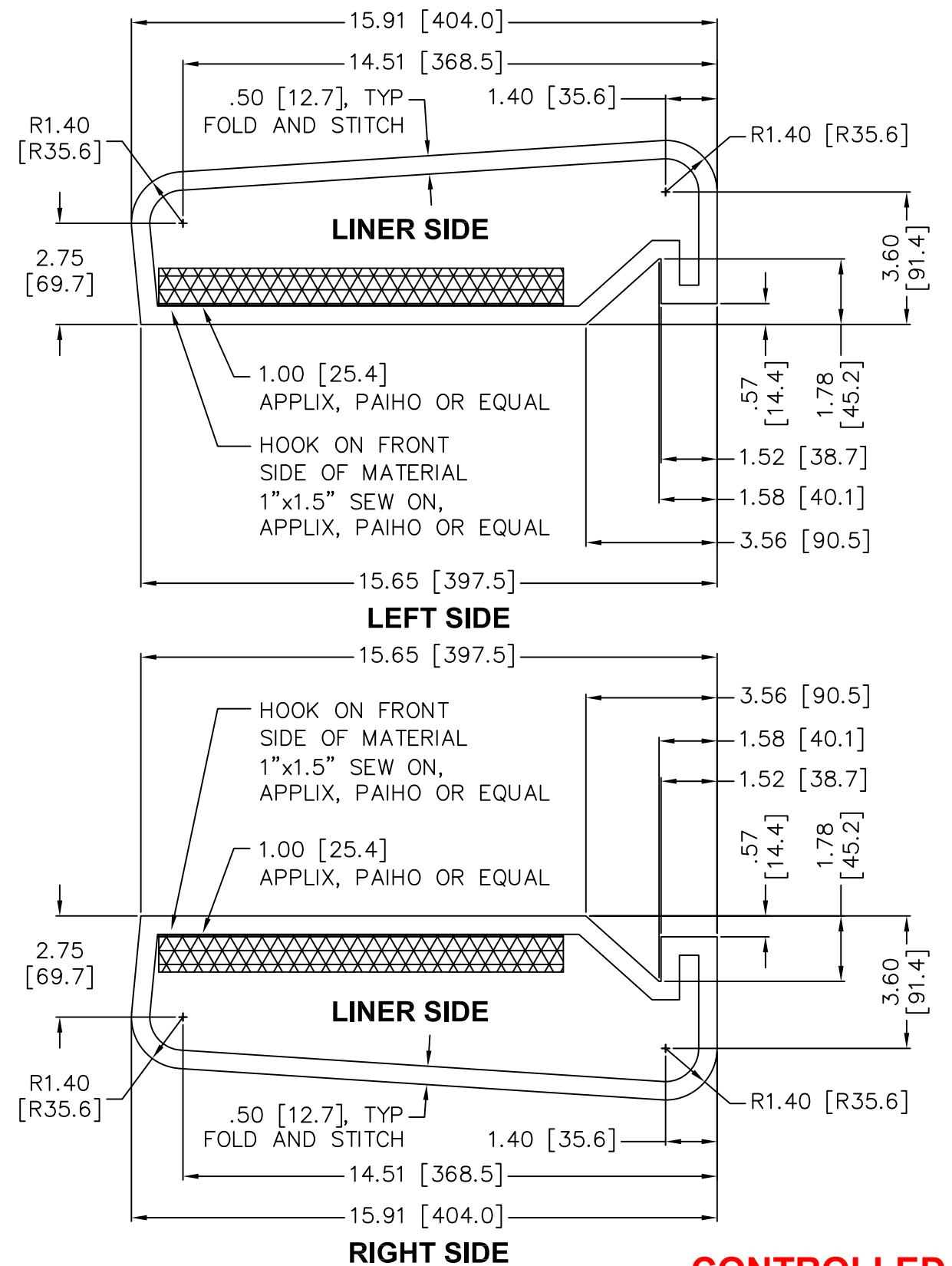
GENERAL NOTES:

1. PAINT: SEE APPROVED PRODUCTS SHEET 4 OF 4
2. DEBURR AND REMOVE ALL SHARP EDGES AND CORNERS.
3. SAMPLES WILL BE PROVIDED FOR PRODUCTION PURPOSES.

C	PAGE 10F4, REVISED BOM AND GENERAL NOTES. PAGE 40F4, REVISED/ADDED MAT'L ID P/N. 21MAR12 ALC	UNLESS OTHERWISE SPECIFIED FRACTIONS ±1/16" DECIMALS .X .XX±.03 [.76] .XXX±.010 [.254]	Drawn by: <i>Int.</i> Date: 07JUN11 A.CREECH <i>ACC</i>	IF THIS DOCUMENT IS NOT MARKED "CONTROLLED" IN RED, THEN IT SHOULD BE USED AS REFERENCE ONLY.	M WASHINGTON METROPOLITAN metro AREA TRANSIT AUTHORITY	
	B		REMOVED REFERENCE TO WMATA SPECIFICATIONS, CHAPTER 10.0, PAGE 4 06FEB12 ALC			Engr. Approval: <i>Int.</i> Date: Jeffery A. Thompson
	A		REVISED UPHOLSTERY COVERS AS PER VENDOR PROVIDED DATA. 05JAN12 ALC			Approved by: <i>Int.</i> Date: Manuel A. Lopez
	-		INITIAL RELEASE. 07JUN11 ALC			Undim. Edges: Scale: 1:0.25
Rev.	Description & Date	Undim. Wall Thk.: Undim. Radii:	Sheet Size: B	Next Assembly:	Title: 5K SERIES PAN, BOTTOM CUSHION, FOLD-UP CAR BODY Part. No.: C18-11-6012 Dwg. No.: WDC18116012-C Sheet: 2 of 4	



UPHOLSTERY, COVER, BOTTOM, FOLD-UP (03)
 MATERIAL IS SYMETRICAL ABOUT CENTERLINE



CONTROLLED

GENERAL NOTES:

- SAMPLES WILL BE PROVIDED FOR PRODUCTION PURPOSES.

C PAGE 10F4, REVISED BOM AND GENERAL NOTES. PAGE 40F4, REVISED/ADDED MAT'L ID P/N. 21MAR12 ALC	UNLESS OTHERWISE SPECIFIED FRACTIONS ±1/16" DECIMALS .X	Drawn by: Int. Date: A.CREECH <i>ACC</i> 07JUN11	IF THIS DOCUMENT IS NOT MARKED "CONTROLLED" IN RED, THEN IT SHOULD BE USED AS REFERENCE ONLY.	M WASHINGTON METROPOLITAN metro AREA TRANSIT AUTHORITY		
		Engr. Approval: Int. Date: Jeffery A. Thompson			Title: 5K SERIES UPHOLSTERY, COVER, BOTTOM, FOLD-UP CARBODY	
		Approved by: Int. Date: Manuel A. Lopez				Part. No.: C18-11-6012
		Undim. Wall Thk.: Undim. Radii:				
Undim. Edges: Scale: 1:0.25	THE DESIGN, CONCEPT AND INFORMATION CONTAINED IN THIS DRAWING IS PROPRIETARY TO WASHINGTON METROPOLITAN AREA TRANSIT AUTHORITY AND MAY NOT BE REPRODUCED, USED OR DISCLOSED WITHOUT WRITTEN PERMISSION OF SAID COMPANY.					

PHYSICAL PROPERTIES, FOAM

TENSILE STRENGTH:
 5.0 lbf/in² MINIMUM WHEN TEST TO ASTM D-3574 TEST E.
 ELONGATION:
 70% MINIMUM WHEN TESTED TO ASTM D-3574 TEST E.
 COMPRESSION:
 SET AT 50%, 15% MAXIMUM WHEN TESTED ACCORDING TO ASTM D-1055.
 FLEX FATIGUE:
 THICKNESS LOSS 5% MAXIMUM WHEN TESTED ACCORDING TO ASTM D-1055.
 TEAR STRENGTH:
 2.0 lbf/in² MINIMUM WHEN TESTED TO ASTM D-3574.
 INDENTATION FORCE DEFLECTION (IFD):
 INTERIOR SEAT BACK IFD 32±8 lbf
 INTERIOR SEAT BOTTOM IFD 42±8 lbf
 DYNAMIC FATIGUE CONSTANT FORCE POUNDING:
 35 MAXIMUM WHEN TESTED ACCORDING TO ASTM D-3574-95 TEST 13 80,000 CYCLES,
 IFD LOSS AT .40% DEFLECTION.
 RESILIENCY:
 25% MINIMUM WHEN TESTED ACCORDING TO ASTM D-3574-95, TEST H

SMOKE, FLAME AND TOXICITY REQUIREMENTS

ASTM D-3675 Is ≤25
 ASTM E-662 Ds (1.5) ≤100
 ASTM E-662 Ds (4.0) ≤175
 TOXICITY:
 BOMBARDIER SMP 800-C.

SEAT COVER CHARACTERISTICS

STITCHING

HIGH QUALITY BONDED NYLON THREAD, LEFT TWIST, LUBED, COLORFAST OR EQUIVALENT. FIVE (5) THREADS PER INCH. BACKSTITCH >1/2" FROM SEAM ENDS INCLUDING VELCRO STITCHING.

UPHOLSTERY

THE SEAT UPHOLSTERY MATERIAL SHALL BE MADE OF INDUSTRIAL GRADE FABRIC-BACKED VINYL WHICH IS SUITABLE FOR USE IN THE TRANSIT ENVIRONMENT, MINIMUM WITH A WEIGHT OF 24 OUNCES PER SQUARE YARD.

SEAT COVER CHARACTERISTICS – CONTINUED

THE MATERIAL SHALL BE CAPABLE OF PASSING ALL OF THE FOLLOWING PHYSICAL TESTS FOR TEXTILE PRODUCT.

TEST METHOD	DESCRIPTION	CRITERIA
AATCC-1 6A	COLORFASTNESS-200 HRS	CLASS 5 (NO CHANGE)
ASTM D-751	WEIGHT	24 oz./sq.yd. (MIN.)
ASTM D-751	TENSILE STRENGTH (GRAB)	120 MD*x110 CMD** (POUNDS)
ASTM D-751	SEAM STRENGTH	95 MD*x85 CMD** (POUNDS)
ASTM D-751	TEAR STRENGTH (TONGUE)	8 MD*x8 CMD** (POUNDS)
ASTM D-751	ADHESION OF COATING (lb./2in)	6 MD*x6 CMD** (POUNDS)
ASTM D-751	BLOCKING	SCALE RATING NO. 2 MAX. (175°F-30min.)
ASTM D-1308	STAIN RESISTANCE	SCALE RATING NO. 4 MIN.
ASTM D-2097	FLEXING (30,000 CYCLES)	NO CRACKING OR FLAKING
ASTM D-4157-92	ABRASION (500,000 CYCLES)	NO WEAR THROUGH (#8 COTTON DUCK ABRADANT)
ASTM D-5733	TEAR STRENGTH (TRAPEZOID)	30 MD*x30 CDM** (POUNDS)
ASTM E-662	SMOKE GENERATION	Ds (4.0), </=200 (COATED), Ds (4.0) </=125 (UNCOATED)
FAR 25.853b	FIRE TEST	SE<10 sec. NO FLAMING DRIPPING
CFFA-6a	COLD CRACK	-20°F MIN.
TOXICITY	BOMBARDIER	SMP 800-C

MD* – DESIGNATES MACHINE DIRECTION
 CMD** – DESIGNATES CROSS MACHINE DIRECTION
 NOTE: THE STITCH SHALL BE LOCK TYPE IN ACCORDANCE WITH FEDERAL SPECIFICATIONS 30.1


MATERIAL IDENTIFICATION - SEAT BACK

	WMATA P/N	THREAD COLOR
CHESAPEAKE SAND T510 SADDLE.....	C18-11-6012 V18-11-6012	BEIGE E NYLON TYPE 2 CLASS A VT 295E 751Q
BURGUNDY T508 SADDLE.....	N/A	WINE E NYLON TYPE 2 CLASS A VT295E 787Q
POTOMAC BLUE T509 SADDLE.....	N/A	YALE BLUE E NYLON TYPE 2 CLASS A VT295E 764Q

APPROVED PRODUCTS

VINYL – OMNOVA SOLUTIONS, INC.
 FOAM – CHESTNUT RIDGE FOAM, INC
 PAINT – **NEW** – POWDER COAT ANSI GRAY (PAS6-C001)
REPAIR – POLYURETHANE SHERWIN-WILLIAMS POLANE,
 ANSI GRAY OR EQUAL. SAND PRIOR TO PAINT.
 HOOK-AND-LOOP FASTENER – APPLIX #800 OR PAIHO TRIHOOK

CONTROLLED

C	PAGE 1 OF 4, REVISED BOM AND GENERAL NOTES. PAGE 4 OF 4, REVISED/ADDED MATL ID P/N. 21MAR12 ALC	UNLESS OTHERWISE SPECIFIED FRACTIONS ±1/16" DECIMALS .X .XX±.03 [.76] .XXX±.010 [.254] ANGLES ±1° UPHOLSTERY ±.25 [6.35]	Drawn by: <i>Int.</i> Date: A.CREECH <i>ALC</i> 07JUN11	IF THIS DOCUMENT IS NOT MARKED "CONTROLLED" IN RED, THEN IT SHOULD BE USED AS REFERENCE ONLY.	 WASHINGTON METROPOLITAN AREA TRANSIT AUTHORITY		
	B REMOVED REFERENCE TO WMATA SPECIFICATIONS, CHAPTER 10.0, PAGE 4 06FEB12 ALC		Engr. Approval: <i>Int.</i> Date: Jeffery A. Thompson			THE DESIGN, CONCEPT AND INFORMATION CONTAINED IN THIS DRAWING IS PROPRIETARY TO WASHINGTON METROPOLITAN AREA TRANSIT AUTHORITY AND MAY NOT BE REPRODUCED, USED OR DISCLOSED WITHOUT WRITTEN PERMISSION OF SAID COMPANY.	
	A REVISED UPHOLSTERY COVERS AS PER VENDOR PROVIDED DATA. 05JAN12 ALC		Approved by: <i>Int.</i> Date: Manuel A. Lopez				Title: 5K SERIES TECHNICAL SPECIFICATIONS CAR BODY
	- INITIAL RELEASE. 07JUN11 ALC		Undim. Edges: Scale: N/A				
Rev.	Description & Date	Undim. Wall Thk.: Undim. Radii:	Sheet Size: Next Assembly: B	Dwg. No.: WDC18116012-C	Sheet: 4 of 4		